



United Medical Maintenance Services

Engineering Publications

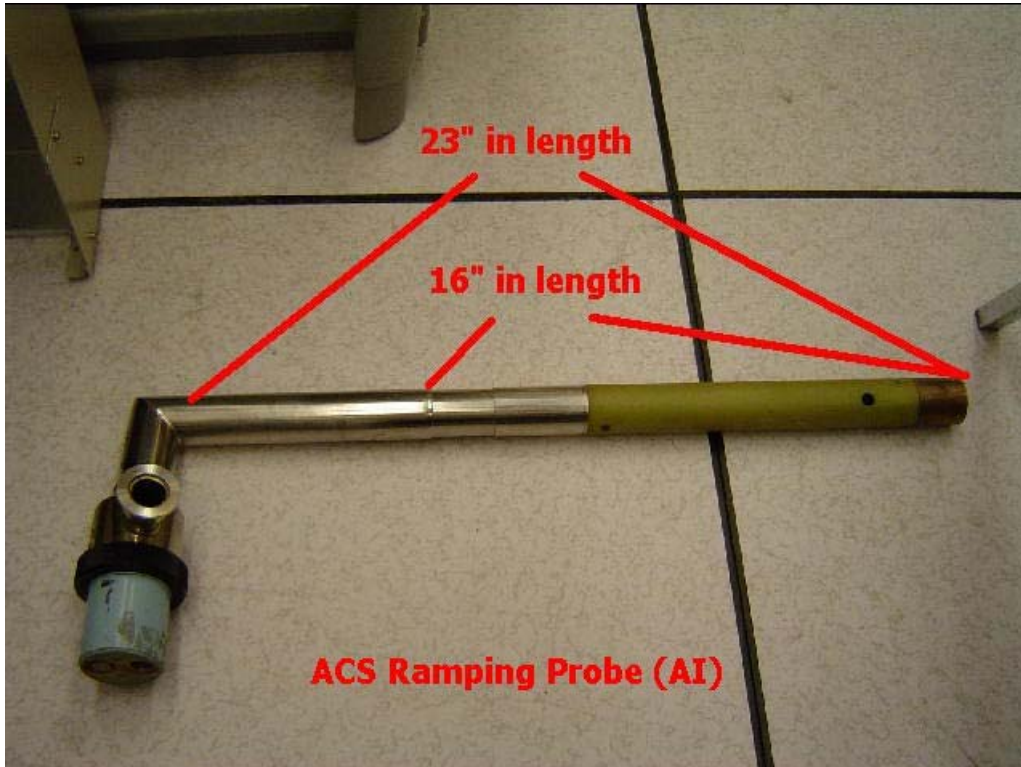
Oxford OR series ramping probes

Disclaimer: This publication is intended for use by personnel who are trained and qualified to service diagnostic imaging equipment. This publication is not intended to replace any OEM procedures or guidelines for maintenance and troubleshooting. UMMS makes every effort to provide accurate and complete information UMMS provides no warranty, expressed or implied, as to the accuracy, reliability or completeness of this publication and its data. UMMS is not liable and is held harmless for any damages or losses as a result of the content, use, perception, interpretation, and understanding of this publication.

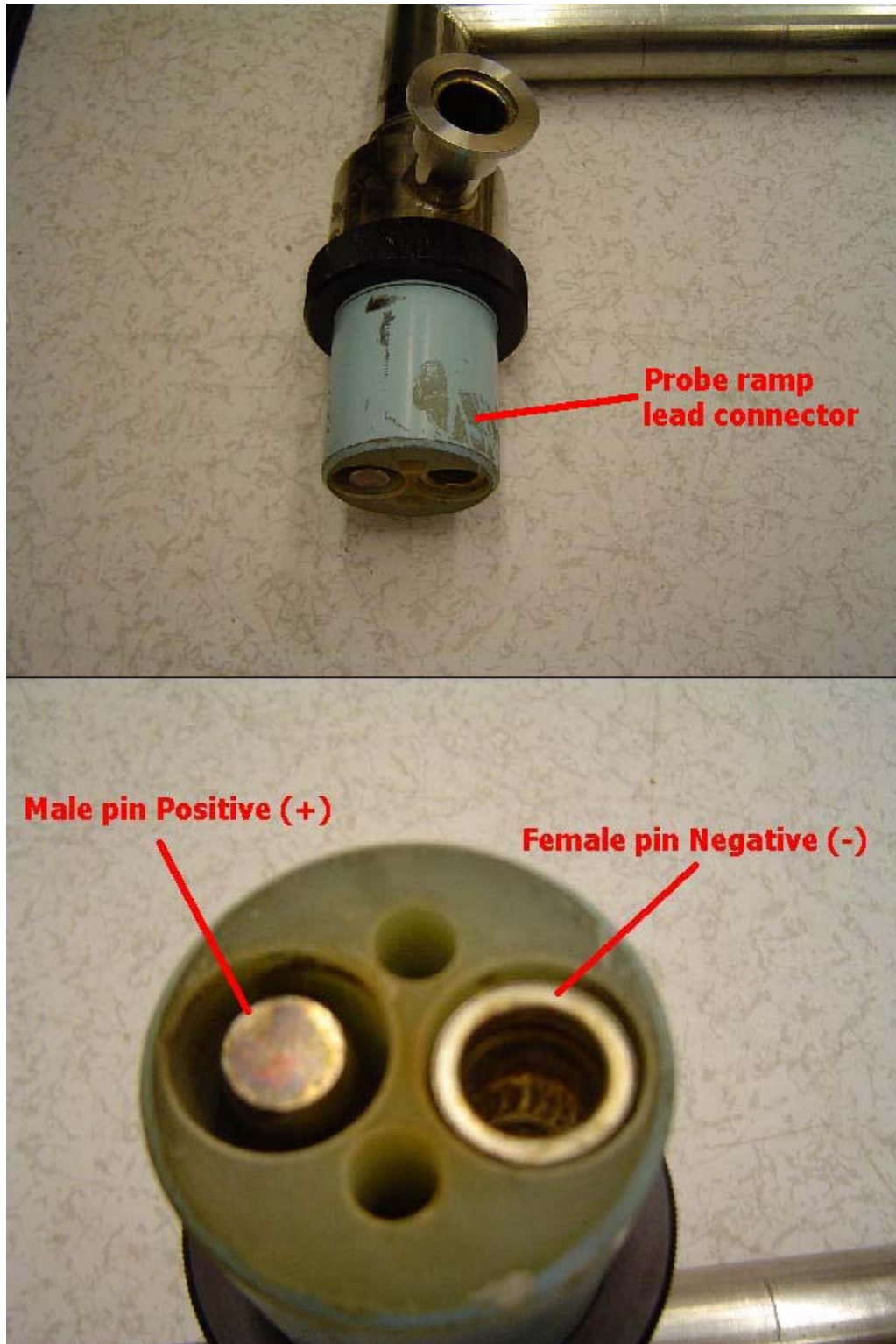
Oxford OR series ramping probes

This publication describes the various ramping probes use on the OR65, OR35 and OR41 magnets. It details the diameter, lengths, pin outs etc... of the probes used.

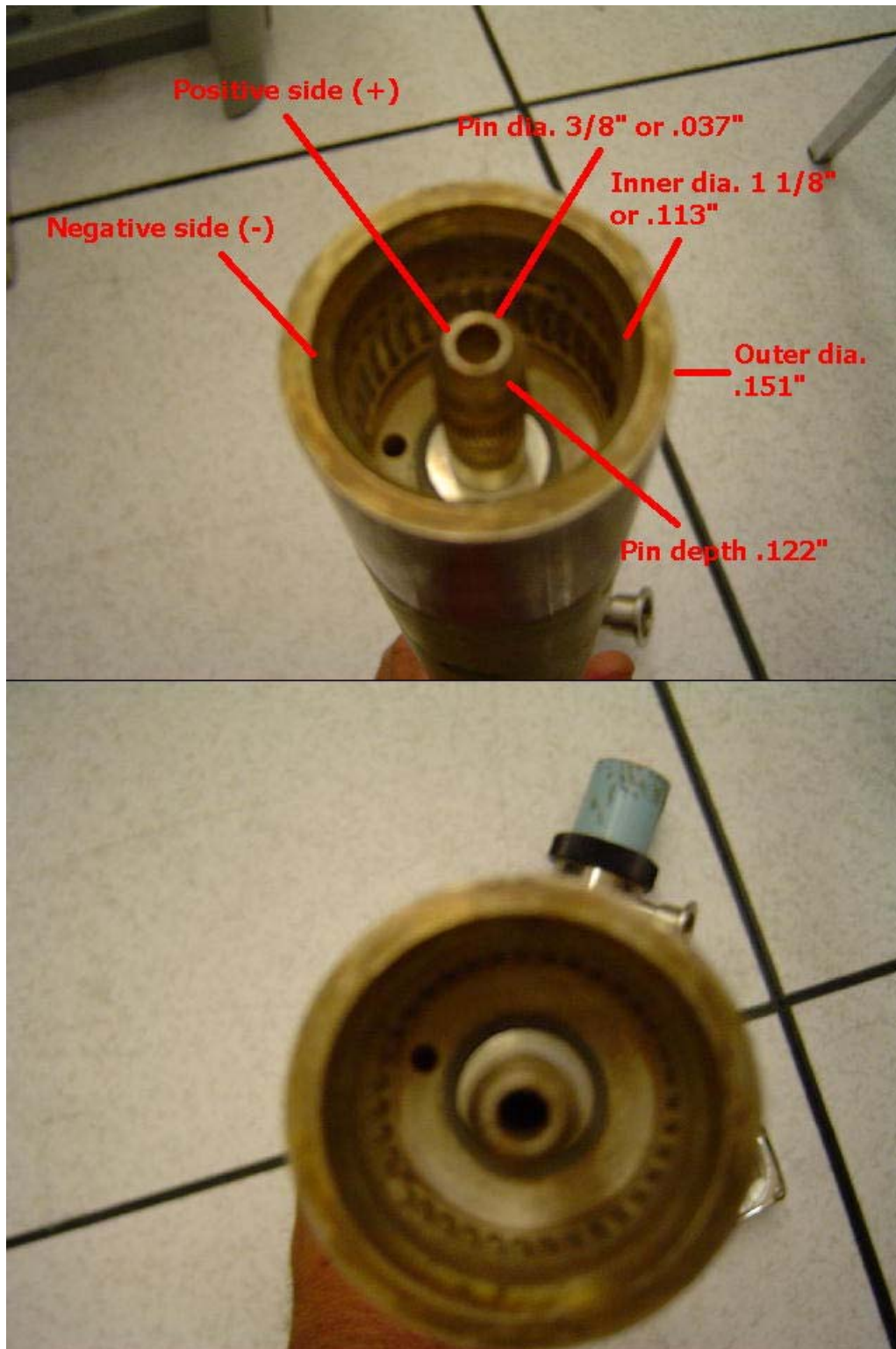
Phillips Gyroscan ACS ramping probe:



Disclaimer: This publication is intended for use by personnel who are trained and qualified to service diagnostic imaging equipment. This publication is not intended to replace any OEM procedures or guidelines for maintenance and troubleshooting. UMMS makes every effort to provide accurate and complete information UMMS provides no warranty, expressed or implied, as to the accuracy, reliability or completeness of this publication and its data. UMMS is not liable and is held harmless for any damages or losses as a result of the content, use, perception, interpretation, and understanding of this publication.

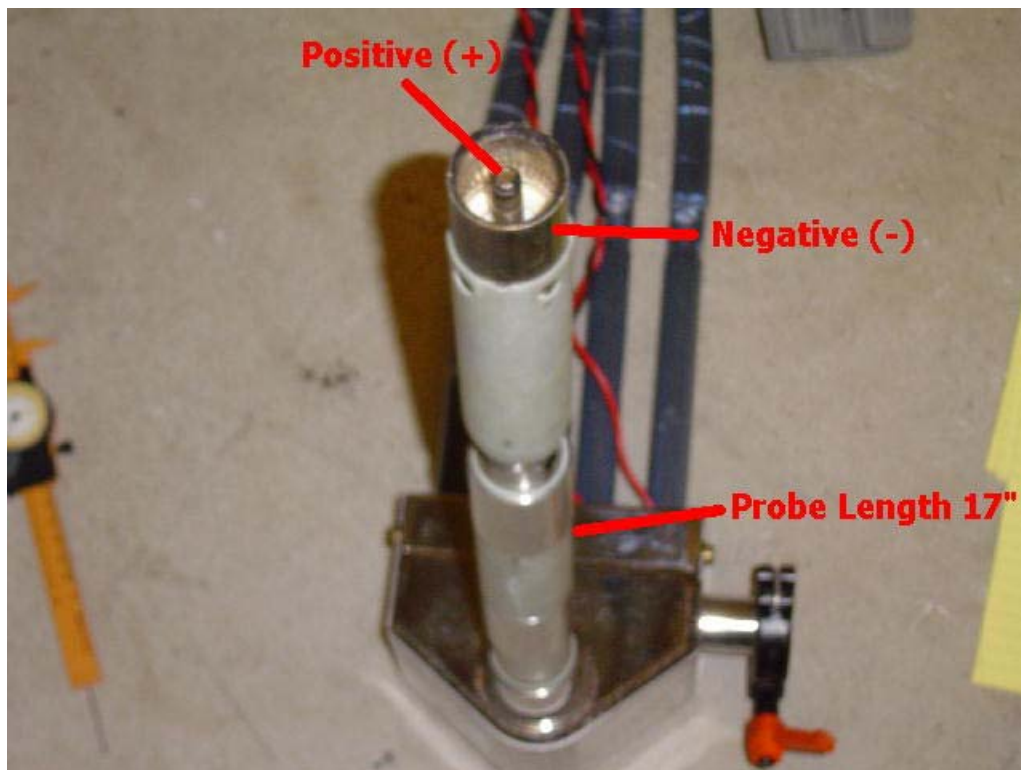
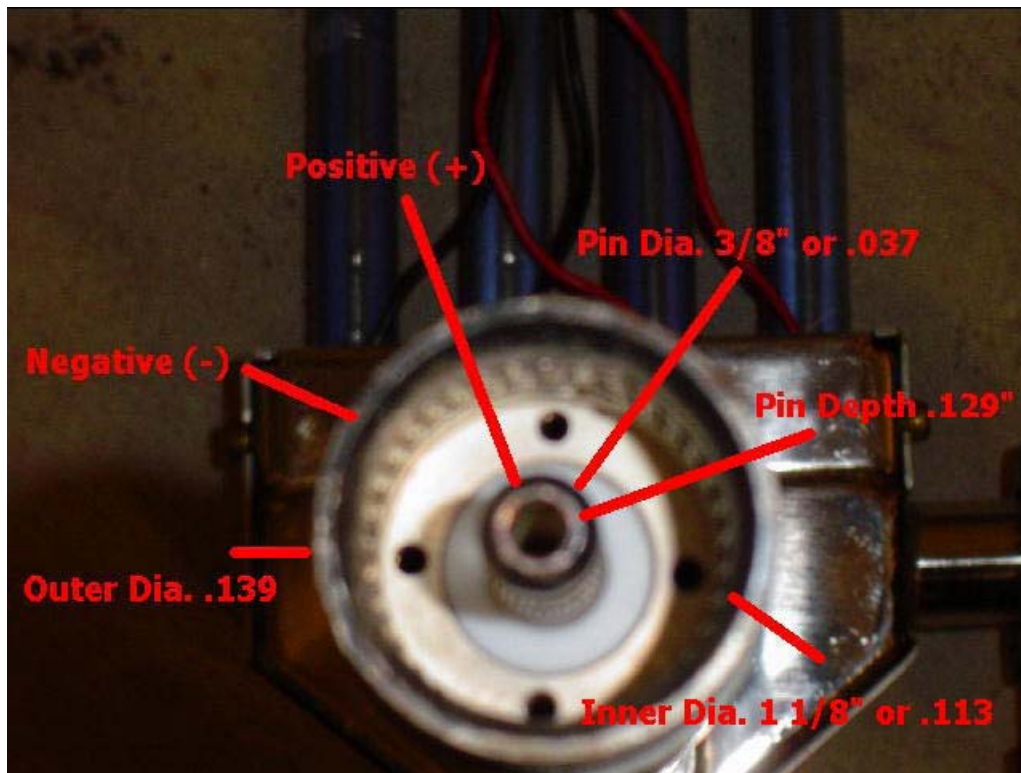


Disclaimer: This publication is intended for use by personnel who are trained and qualified to service diagnostic imaging equipment. This publication is not intended to replace any OEM procedures or guidelines for maintenance and troubleshooting. UMMS makes every effort to provide accurate and complete information UMMS provides no warranty, expressed or implied, as to the accuracy, reliability or completeness of this publication and its data. UMMS is not liable and is held harmless for any damages or losses as a result of the content, use, perception, interpretation, and understanding of this publication.



Disclaimer: This publication is intended for use by personnel who are trained and qualified to service diagnostic imaging equipment. This publication is not intended to replace any OEM procedures or guidelines for maintenance and troubleshooting. UMMS makes every effort to provide accurate and complete information UMMS provides no warranty, expressed or implied, as to the accuracy, reliability or completeness of this publication and its data. UMMS is not liable and is held harmless for any damages or losses as a result of the content, use, perception, interpretation, and understanding of this publication.

Siemens Harmony/Symphony ramping probe:

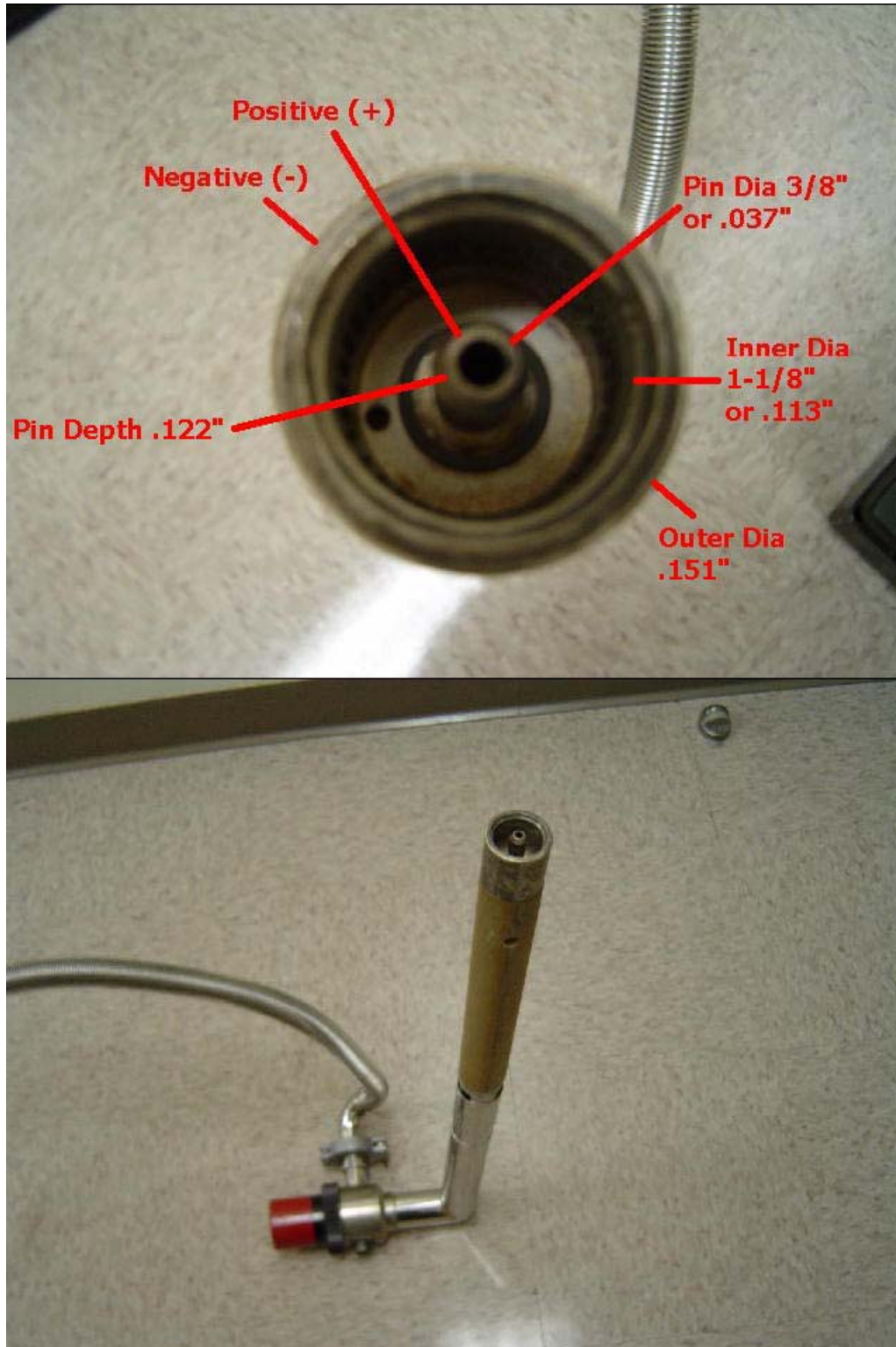


Disclaimer: This publication is intended for use by personnel who are trained and qualified to service diagnostic imaging equipment. This publication is not intended to replace any OEM procedures or guidelines for maintenance and troubleshooting. UMMS makes every effort to provide accurate and complete information UMMS provides no warranty, expressed or implied, as to the accuracy, reliability or completeness of this publication and its data. UMMS is not liable and is held harmless for any damages or losses as a result of the content, use, perception, interpretation, and understanding of this publication.

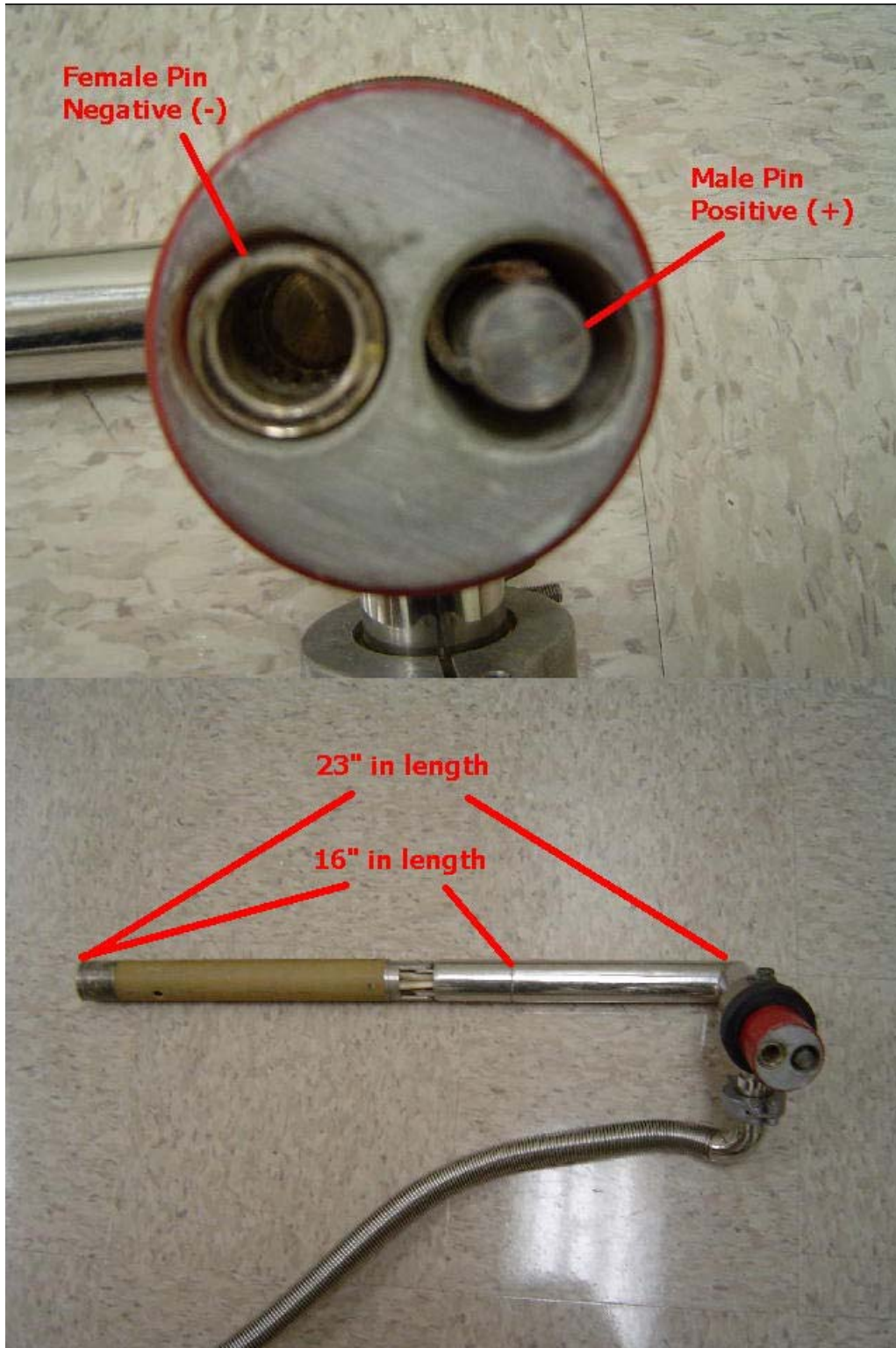


Disclaimer: This publication is intended for use by personnel who are trained and qualified to service diagnostic imaging equipment. This publication is not intended to replace any OEM procedures or guidelines for maintenance and troubleshooting. UMMS makes every effort to provide accurate and complete information UMMS provides no warranty, expressed or implied, as to the accuracy, reliability or completeness of this publication and its data. UMMS is not liable and is held harmless for any damages or losses as a result of the content, use, perception, interpretation, and understanding of this publication.

Siemens Impact ramping probe



Disclaimer: This publication is intended for use by personnel who are trained and qualified to service diagnostic imaging equipment. This publication is not intended to replace any OEM procedures or guidelines for maintenance and troubleshooting. UMMS makes every effort to provide accurate and complete information UMMS provides no warranty, expressed or implied, as to the accuracy, reliability or completeness of this publication and its data. UMMS is not liable and is held harmless for any damages or losses as a result of the content, use, perception, interpretation, and understanding of this publication.



Disclaimer: This publication is intended for use by personnel who are trained and qualified to service diagnostic imaging equipment. This publication is not intended to replace any OEM procedures or guidelines for maintenance and troubleshooting. UMMS makes every effort to provide accurate and complete information UMMS provides no warranty, expressed or implied, as to the accuracy, reliability or completeness of this publication and its data. UMMS is not liable and is held harmless for any damages or losses as a result of the content, use, perception, interpretation, and understanding of this publication.