

The logo for United Medical Maintenance Services (UMMS) is located in the top left corner of a blue vertical bar. It consists of the letters "UMMS" in a white, sans-serif font, with a white, curved line underneath that suggests a stylized 'U' or a swoosh. A small white starburst is positioned above the 'U'.

**United Medical Maintenance Services**

**Engineering Publications**

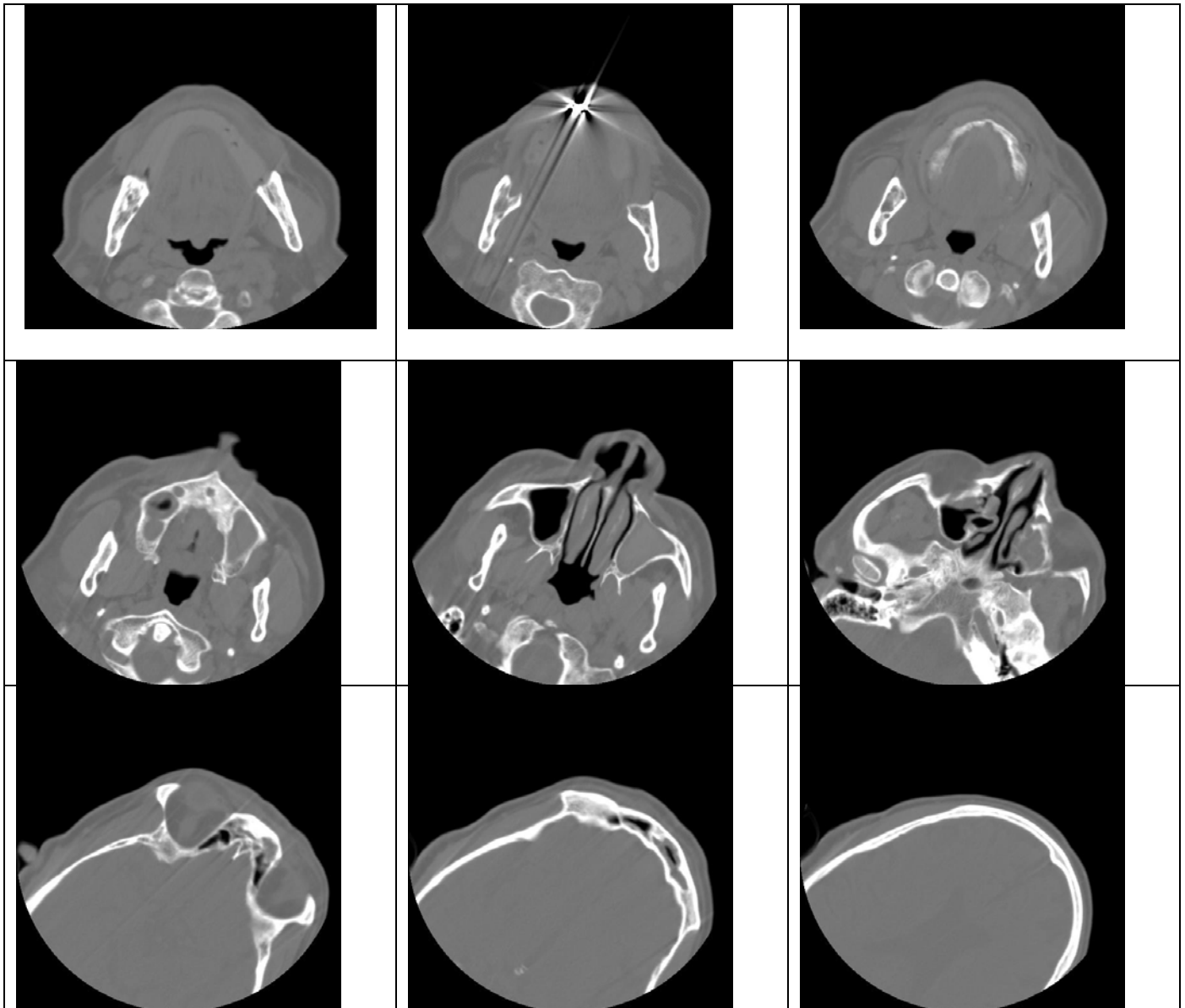
**GE CT Axial Encoder Problem**

**Disclaimer:** This publication is intended for use by personnel who are trained and qualified to service diagnostic imaging equipment. This publication is not intended to replace any OEM procedures or guidelines for maintenance and troubleshooting. UMMS makes every effort to provide accurate and complete information UMMS provides no warranty, expressed or implied, as to the accuracy, reliability or completeness of this publication and its data. UMMS is not liable and is held harmless for any damages or losses as a result of the content, use, perception, interpretation, and understanding of this publication.

This publication describes a problem with a axial encoder on a GE Lightspeed Ultra 8 slice CT scanner. The problem involved to aspects.

- Patient alignment off center
- Patient head tilting during scans when patient wasn't tilting their head.

In viewing the images below, the head was tilting but the patient was not actually moving at all.



**Disclaimer:** This publication is intended for use by personnel who are trained and qualified to service diagnostic imaging equipment. This publication is not intended to replace any OEM procedures or guidelines for maintenance and troubleshooting. UMMS makes every effort to provide accurate and complete information UMMS provides no warranty, expressed or implied, as to the accuracy, reliability or completeness of this publication and its data. UMMS is not liable and is held harmless for any damages or losses as a result of the content, use, perception, interpretation, and understanding of this publication.

It was found that the axial encoder shaft was separating from the internal encoder assembly causing a slipping effect as the system rotated. This in part resulted in the images tilting, patient position light off center and eventually causing the rotation system to go offline.

The encoder system for the LightSpeed QX/i, Ultra and some Brightspeed series are identical and interchangeable.

**Disclaimer:** This publication is intended for use by personnel who are trained and qualified to service diagnostic imaging equipment. This publication is not intended to replace any OEM procedures or guidelines for maintenance and troubleshooting. UMMS makes every effort to provide accurate and complete information UMMS provides no warranty, expressed or implied, as to the accuracy, reliability or completeness of this publication and its data. UMMS is not liable and is held harmless for any damages or losses as a result of the content, use, perception, interpretation, and understanding of this publication.